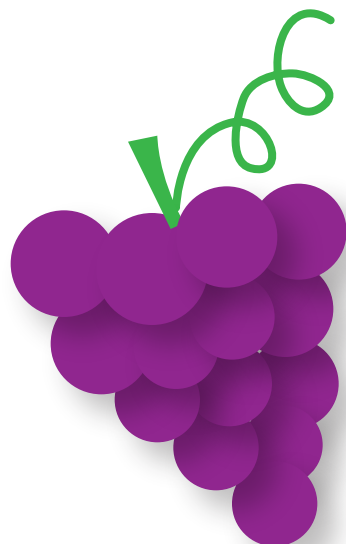


# Chameleon Jelly

## What You Need

- 1 small clear plastic container
- 1 spoon
- 15 mL (1 tablespoon) grape jelly
- 100 mL (1/2 cup) warm water
- 5/8 mL (1/8 teaspoon) baking soda
- 15 mL (1 tablespoon) vinegar



## What to Do

1. Put the jelly and water into the container. Stir to dissolve the jelly. What color is the solution?
2. Add the baking soda to the solution and stir. Observe what happens.
3. Add the vinegar to the solution and stir. Observe what happens. Hold the solution up to light for an easier view.
4. How did you know when a chemical reaction has taken place?

## What's Happening

Chemical indicators are clues that a chemical reaction has taken place. One example of a chemical indicator is color change. The purple jelly solution undergoes a reaction when you add the baking soda. The evidence of this reaction is the color change and the production of a gas. When vinegar is added, another chemical reaction happens, accompanied by another color change.